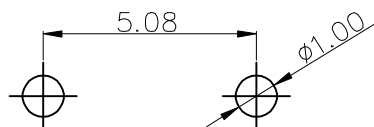
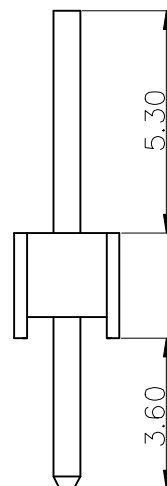
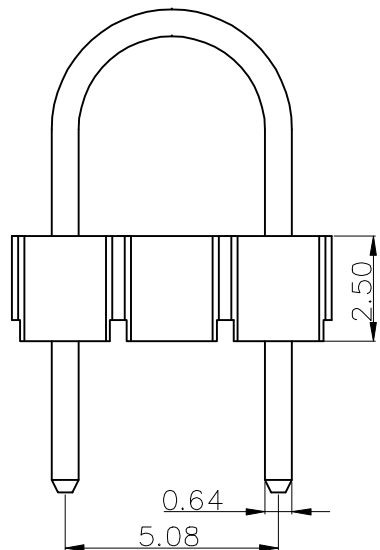
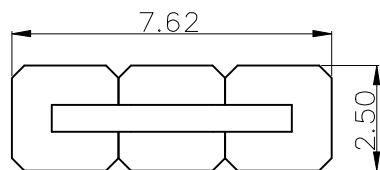


| | | | |
|------|-----------------------|---------|------------|
| REV. | ECN NO OR DESCRIPTION | REVISED | DATE |
| A | NEW | JASON | 11.18.2019 |

NOTE:

- MATERIAL:
HOUSING: THERMOPLASTIC,HIGH TEMP, 30% G/F
UL 94V-0, COLOR: BLACK.
CONTACT: BRASS.
- FINISH:
CONTACT: AU PLATING OVER NI(50m" MIN.)
- ELECTRICAL:
CONTACT RESISTANCE: 20mΩ Max.
INSULATION RESISTANCE: 1000MΩ Min.
DIELECTRIC WITHSTANDING VOLTAGE: 500V AC
CURRENT RATING: 3A
- ENVIRONMENTAL:
OPERATING TEMPERATURE: -25°C TO +85°C
COMPLIANCE: RoHS



TOLERANCE: ±0.05
RECOMMENDED PCB LAYOUT

WPH-1000-102-4 G X B- X R

- 4-STRAIGHT DIP
- G-GOLD FLASH
- 3-15u"
- 4-30u"
- C-LCP
- P-PBT
- 1-NY6T
- R-RoHS
- H-HF
- G-GP
- B-BAG
- R-TAPE REEL
- 1-TUBE
- T-TRAY
- B-BLACK
- R-RED
- Y-YELLOW

| | | | |
|---------------------------------------|----------|---|--|
| UNLESS OTHERWISE SPECIFIED TOLERANCES | | winconn® KunShan Winconn Electronic Technology Co., Ltd. | |
| DECIMALS: | ANGLES: | TITLE | PIN HEADER 2.54mm SINGLE ROW STRAIGHT DIP U TYPE |
| X :±0.50 | X :±5° | DWN | PART NO.WPH-1000-102-4GXB-XR |
| X.X :±0.38 | X.X :±3° | CHKD | SCALE 1:1 UNIT: mm |
| X.XX :±0.25 | | APVD | SIZE: A4 SHEET:10F1 REV: A |
| CUSTOMER COPY | | | |